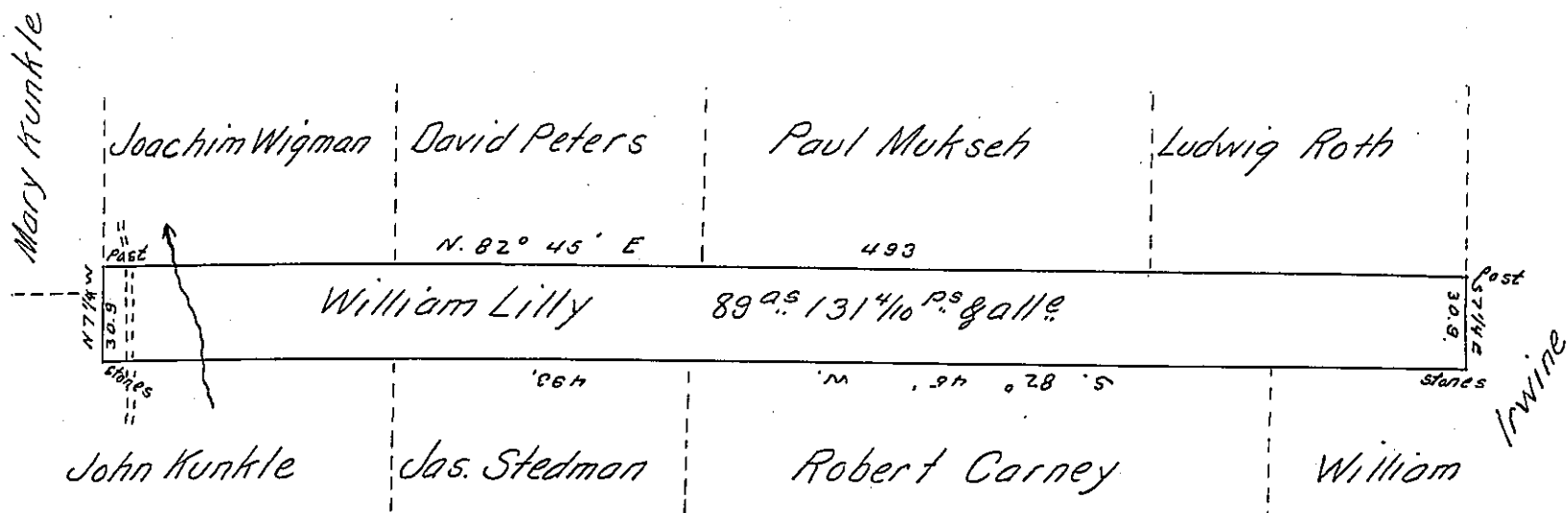


Hazle Twp  
Luzerne



Draft of a tract of land situated on the waters of Cranberry Creek in the township of Hazle in the County of Luzerne adjoining Joachim Wigman, Ludwig Roth, W<sup>m</sup> Irwine, John Kunkle & others. Containing Eighty nine acres and one hundred and thirty one <sup>1</sup>/<sub>10</sub> perches, and allowance of six per cent for Roads &c.

Surveyed the above tract of land the 5<sup>th</sup> day of June 1862 to William Lilly in pursuance of his warrant dated the 25<sup>th</sup> day of October 1858.

Hon. Henry Souther }  
Surveyor Gen. }

John Sturdevant  
County Surveyor.

IN TESTIMONY that the above is a copy of the original remaining on file in the Department of Internal Affairs of Pennsylvania, made conformably to an Act of Assembly approved the 16th day of February, 1833, I have hereunto set my Hand and caused the Seal of said Department to be affixed at Harrisburg, this twelfth day of September 1905,

*Loce R. Brown*  
Secretary of Internal Affairs.